

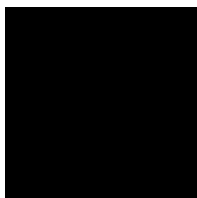


EVO-DOORS

BY RENLITA



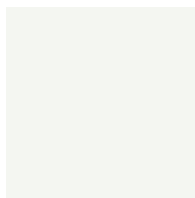
EVO DOORS STANDARD COLORS



Rich Matte Black



Mystic Bronze



Bone White



Anodized Silver

Custom colors available. Most colors can be matched accurately and require a color sample. Additional costs and lead-time may apply. Color matching is approximate and could incur additional per pound powder pricing and/or minimum purchase quantities.

Colors shown are an approximate match.

FINISHED WITH POWDER COATINGS FROM SHERWIN-WILLIAMS

Our doors are finished with Sherwin-Williams® Powdura® 4000 powder coatings that are designed to provide substantial resistance to abrasion, impact, scuffing and scratching, while delivering a superb finish and long-term durability. Powdura 4000 is a proven technology that can withstand the elements – from UV rays to high heat and humidity – and meets or exceeds AAMA 2604 specifications, providing excellent gloss retention and weathering resistance.

PERFORMANCE DATA

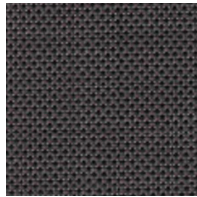
AAMA Spec	2604
Film Thickness ASTM D7091	1.8 to 3.0 mil
Gloss ASTM D523	Gloss > 30% retention

EVO OFFERS SUNSCREENS AND BUG SCREENS AS AN ADD-ON

Retractable Sunscreens: Renlita offers retractable screens for residential and commercial properties.



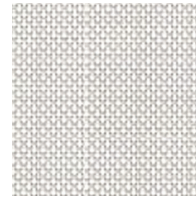
Black



Tobacco



White



Bone

Retractable Insect Screens: Enjoy a bug-free outdoor space.



Bug Screen



RENLITA
Custom Opening Solutions



Visit www.EVO-Doors.com or
call (903) 408-6498 to learn more.

PROUDLY FINISHED WITH
SHERWIN-WILLIAMS®
COATINGS