

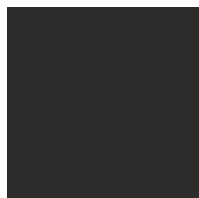


# EVO-DOORS

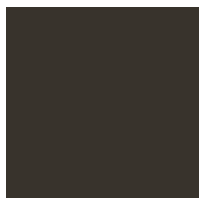
BY RENLITA



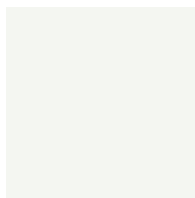
## EVO-DOORS STANDARD COLORS



Satin Black



Chestnut Bronze



Bone White



Sandstone

Custom colors available. Most colors can be matched accurately and require a color sample. Additional costs and lead-time may apply. Color matching is approximate and could incur additional per pound powder pricing and/or minimum purchase quantities.

Colors shown are an approximate match.

## FINISHED WITH POWDER COATINGS FROM SHERWIN-WILLIAMS

Our doors are finished with Sherwin-Williams Powdura® 4000 powder coatings that are designed to provide substantial resistance to abrasion, impact, scuffing and scratching, while delivering a superb finish and long-term durability. Powdura 4000 is a proven technology that can withstand the elements – from UV rays to high heat and humidity – and meets or exceeds AAMA 2604 specifications, providing excellent gloss retention and weathering resistance.

### PERFORMANCE DATA

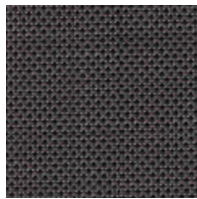
AAMA Spec	2604
Film Thickness ASTM D7091	1.8 to 3.0 mil
Gloss ASTM D523	Gloss > 30% retention

## EVO OFFERS SUNSCREENS AND BUG SCREENS AS AN ADD-ON

**Retractable Sunscreens:** Renlita offers retractable screens for residential and commercial properties.



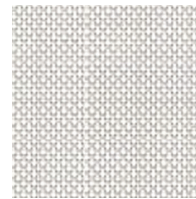
Black



Tobacco



White



Bone

**Retractable Insect Screens:** Enjoy a bug-free outdoor space.



Bug Screen



**RENLITA**  
Custom Opening Solutions



Visit [www.EVO-Doors.com](http://www.EVO-Doors.com) or  
call (903) 408-6498 to learn more.

PROUDLY FINISHED WITH  
**SHERWIN-WILLIAMS**  
COATINGS